



Victoria Apartments

Bansko

Exclusive to Coral Estates

Ref: VI 001

Bedrooms: Studio, 1 and 2 bedrooms

Pool: Communal

Garden: Communal

Completion Date: December 2007

Position: Next to the ski lift

Description

Situated in the new centre of the world famous Bansko ski resort and just across the street from the luxurious “Kempinski” hotel, the “Victoria” resort is so close to the ski lifts that you will be able to step out of your door and begin to enjoy the slopes and stunning forests almost immediately.

The “Victoria” resort will also contain a hotel, thus providing all facilities and services you may desire as well as a fully manned reception. The apartment building itself will contain an indoor swimming pool, a spa center with sauna hydro-massages and a solarium, providing an excellent opportunity to relax after enjoying a vigorous day out skiing or hiking.

You will also have an on site gym for those wanting an extra holiday work-out.

Take advantage of the excellent prices at the finest location in one of the best ski resorts in Bulgaria!

Facilities

Spa centre with sauna

Hydro massages

Solarium

Indoor swimming pool

Childrens playground

Restaurant

Ski depot

Massages

Gym

**Individual electric for each apt;
warm water provided**

Indoor and outdoor parking

**Gated community with 24 hour
security**



Apartments

39 one bedroom; 18 two bedroom; 15 studios for sale

Ground floor, first and second floor only.

Third and fourth floors retained by the developer

Views to the mountains and city



Payment Structure

Deposit: □ 1,000

35% on signing the preliminary contract

25% on roof (expected December 2006)

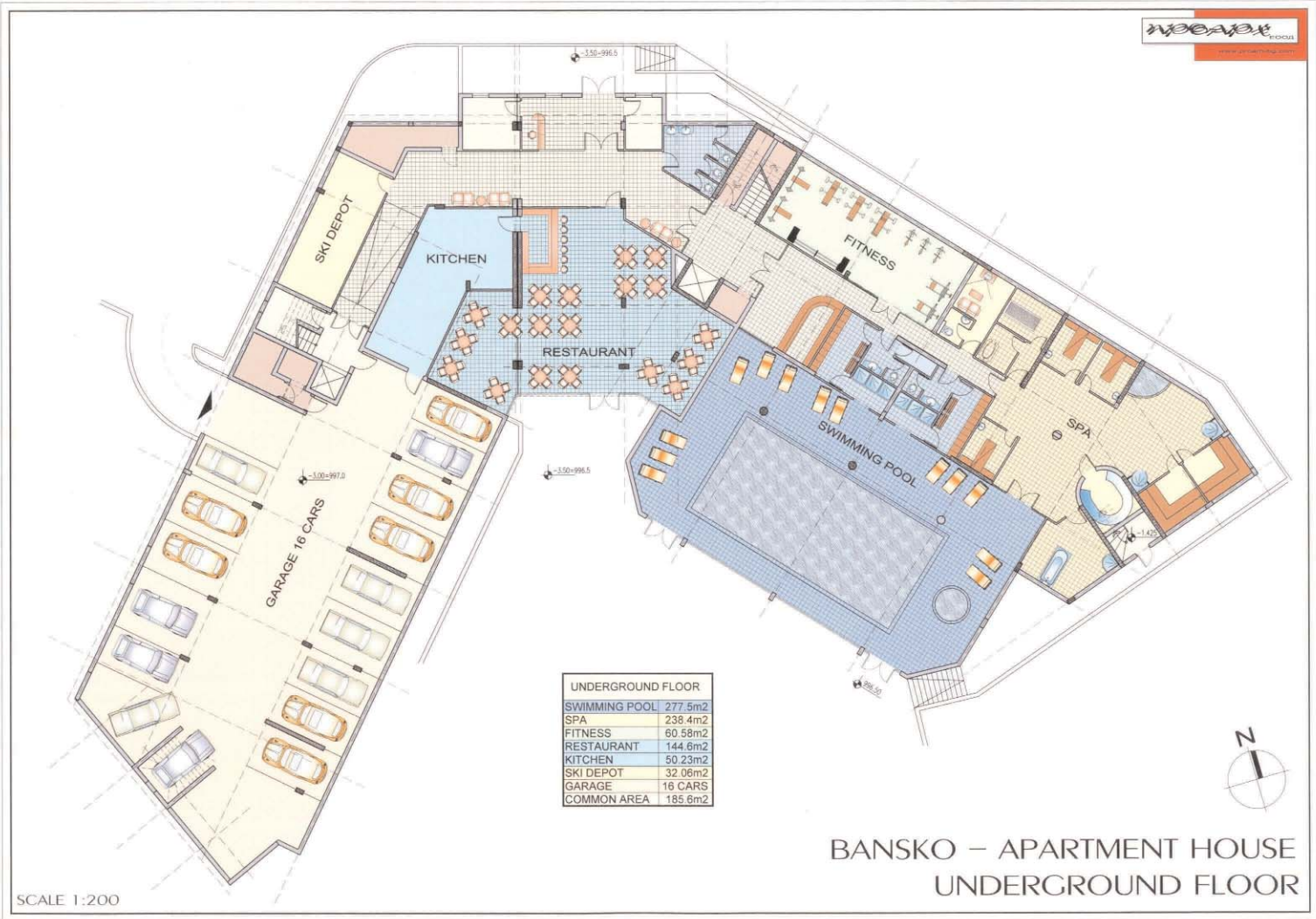
40% On Completion

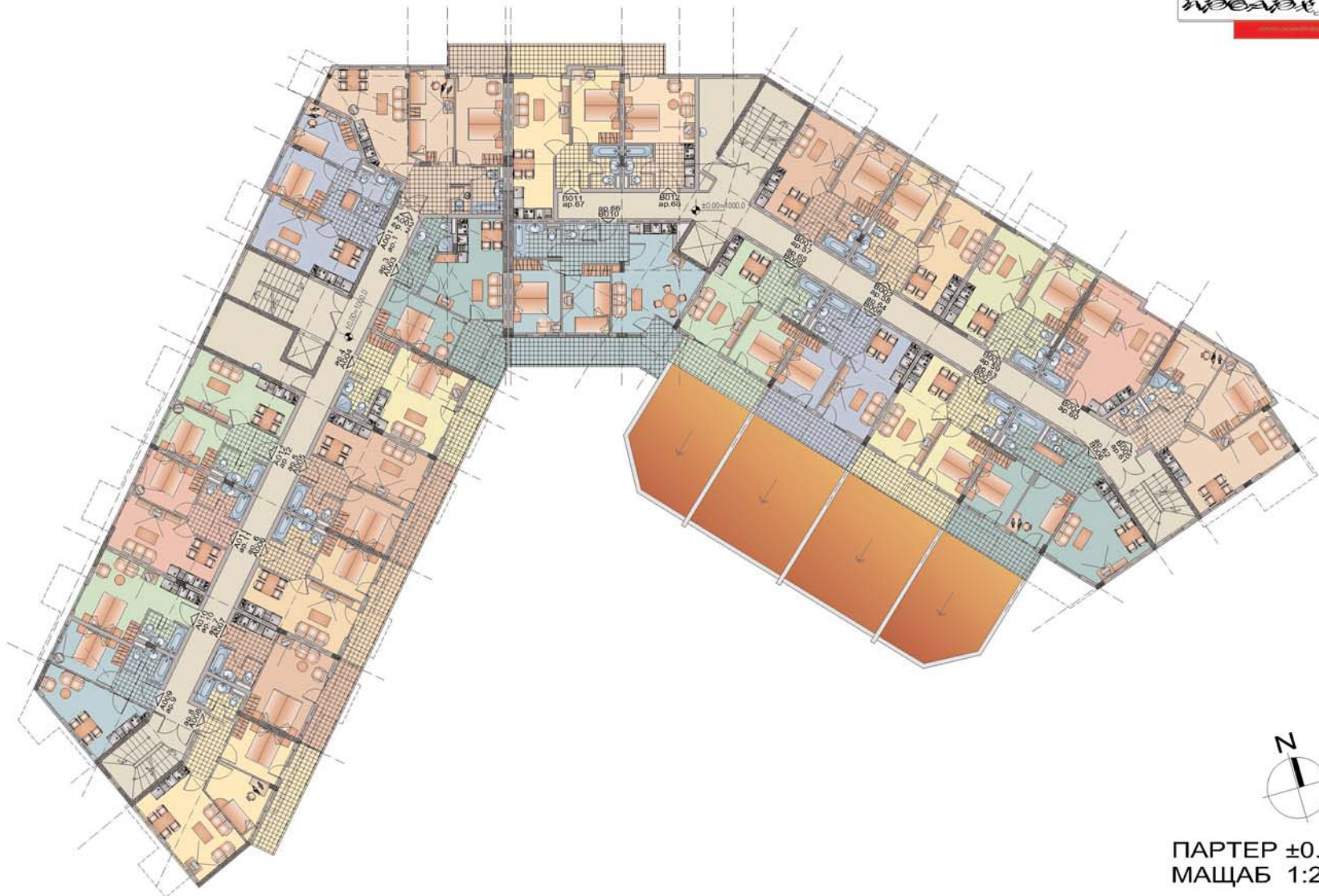
A Maintenance charge of circa 10 euros per square metre will apply, and is to be confirmed





Floor Plans





BANSKO-APARTMENT HOUSE
GROUND FLOOR



ПАРТЕР ±0.00
МАЩАБ 1:200

проектант:
арх.Р.Едрева



BANSKO-APARTMENT HOUSE
FIRST FLOOR

ПЪРВИ ЕТАЖ
МАЩАБ 1:200

проектант:
арх.Р.Едрева



BANSKO-APARTMENT HOUSE
SECOND FLOOR



ВТОРИ ЕТАЖ
МАЩАБ 1:200

проектант:
арх.Р.Едрева